



# NASSAU POOLS & SPAS



**Your  
backyard  
oasis is  
calling  
you.**



CATALOG

[nassaupoolsandspas.com](http://nassaupoolsandspas.com)

# NASSAU POOLS & SPAS

EST. '82

## About Us

Founded in 1982, Nassau Pools & Spas excels in designing, building, and installing custom in-ground and above-ground pools, as well as hot tubs. Our commitment to innovation is evident in the incorporation of cutting-edge technology, automation, and energy-efficient solutions across all our projects.

Our team of certified service technicians excel in providing top-tier service and repair for pool equipment, covers, and liners. This expertise is complemented by our maintenance technicians, who consistently deliver clean and clear water, ensuring your pool is always free from debris.

Additionally, we have a retail store where we provide water testing, pool and hot tub chemicals, pool accessories, parts and equipment, in-store hot tub and above ground pool displays, and over 40 years of experience to support and answer all customer questions. As a family company we take pride in our 5 company pillars, quality craftsmanship, team work, innovation, customer focus, and accountability. We strive to live and deliver these throughout everything we do!



**Get answers to your questions and check out our products!**

11850 62nd Street NE, Suite 101  
Albertville, MN 55301  
Phone: (763) 441-4993

# Table of Contents

<b>OUR PROCESS</b>	<b>3</b>	<b>POOL LIGHTING</b>	<b>19</b>
<b>POOL TYPES</b>	<b>6</b>	<b>SPORTS &amp; FEATURES</b>	<b>20</b>
<b>POOL SIZES &amp; DEPTH TYPES</b>	<b>8</b>	<b>WATER FEATURES</b>	<b>21</b>
<b>STEPS • BENCHES • SWIMOUTS</b>	<b>10</b>	<b>POOL DECKING</b>	<b>23</b>
<b>SUN DECKS</b>	<b>11</b>	<b>HOT TUBS</b>	<b>24</b>
<b>POOL LINER OPTIONS</b>	<b>12</b>	<b>NEXT STEPS</b>	<b>25</b>
<b>POOL COVER OPTIONS</b>	<b>13</b>	<b>PREFERRED PARTNERS</b>	<b>26</b>
<b>POOL EQUIPMENT</b>	<b>15</b>		



# Our Process

## PHASE 1: DESIGN



- 1.** We start with an in-person consultation and site visit. We'll walk the property together, take measurements, discuss design options and materials, pool size, and any specific site details that may impact your project.



- 2.** Next, we compile all the details and create a 3D design, this allows us to align on and make any changes you'd like to see.



- 3.** After we've reviewed all the final details, and you are ready to move forward, we'll complete a contract outlining the full project. We also work with 3 financing companies to fit most customers' needs.

# Our Process

## PHASE 2: CONSTRUCTION



**4.** Now it is time to get the appropriate permits.

---



**5.** We then order materials and schedule a pre-production planning meeting to review the timeline and detailed process of the construction phase of the project.

---



**6.** It's time to start building! This includes excavating, installing steel walls, pouring concrete footings, running plumbing, installing equipment, placing the pool bottom, installing the liner, and filling your pool!

---



**7.** We're almost done! The last few steps include backfilling around the pool, the installation of your pool decking of choice, and landscaping.

---



**8.** Finally, the last and most important step of all is introducing you to your new pool, walking you through a pool tutorial so you know exactly how everything works, and getting all your warranty details in place!



# Pool Types

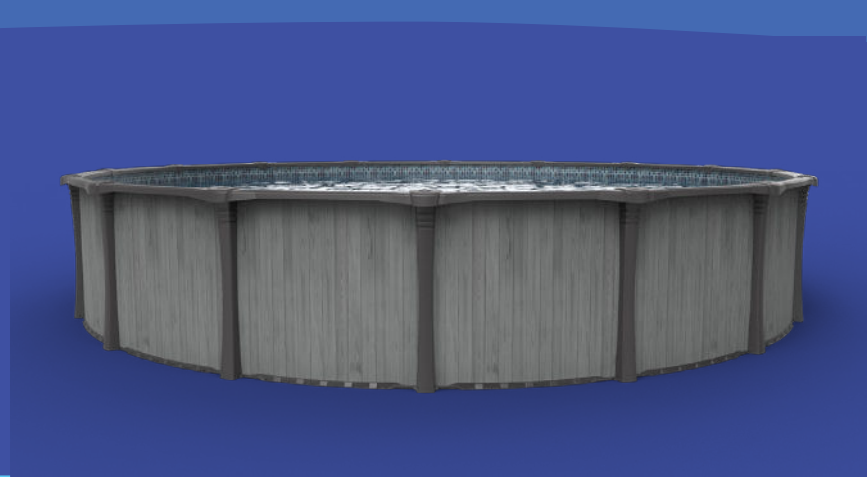
In-Ground Pool



Semi In-Ground Pool



Above-Ground Pool







STEEL WALLED



VINYL LINER

## Our Pools

Nassau pools are **steel walled** and employ a **vinyl liner**, which are the best for our climate and provide the most options for our customers.

## Pool Sizes

IN FEET

12 x 24

16 x 32

18 x 36

18 x 42

20 x 40

20 x 44

20 x 50

CUSTOM

## Pool Depth Types



STANDARD

All one depth



STANDARD

Shallow to deep taper



SPORTS

deep middle,  
shallower ends





**Now for the fun part!** Take a look through the wide variety of pool customization options we offer to get an idea of which options are best for your pool! Questions about them? Contact Nassau Pools & Spas and we'll help you out!

**POOL OPTIONS**

# Steps, Benches, and Swimouts



**CORNER STEPS**



**CORNER STEP & BENCH**



**FULL LENGTH STAIRS**



**DEEP END CORNER BENCH**



**DEEP END CORNER BENCHES**



**FULL DEEP END BENCH**

## POOL OPTIONS

# Vinyl Over Steps



## Vinyl Over Steps Features & Benefits

- Existing or custom designs
- Add-on unique features
- Textured vinyl surface for seamless look

## POOL OPTIONS

# Sun Decks



POOL OPTIONS

# Pool Liner Options

It's all about color! Selecting the perfect pool liner will determine your pool's colors for many summers to come, so choosing a liner that best suits your backyard's aesthetic will allow your new pool to become its beautiful new centerpiece.

There are many options to choose from so if you want some help or advice *please don't hesitate to contact the experts at Nassau Pools & Spas!*



## POPULAR LINER OPTIONS



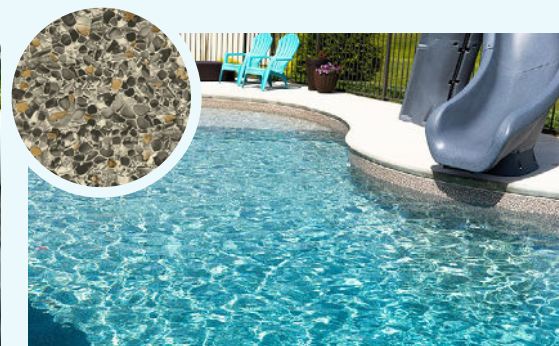
### TrueStone Collection: Blue Slate

TrueStone Collection Blue Slate If your dream is to swim in a pool built out of a solid sheet of shimmering slate, then look no further. Designed in a rich, blue hue with the sparkle of "shimmer stone", this liner provides something unique, modern, and crisp.



### Flagstone Gray

Inspired by natural cut flagstone, Flagstone Gray pairs together large regular and irregular shaped stones in a variety of gray hues to create a distinctive realistic appearance. The innovative design of this pattern is easy to coordinate with many backyard environments.



### Sandstone Tan

Our Sandstone Tan liner creates vivid teal water with its variety of warm, natural hues and fine texture. The classic look of this liner looks fantastic in a wide variety of pool shapes and sizes and complements the tones and colors of your backyard's landscape.

POOL OPTIONS

# Pool Cover Options

## Auto Cover: APC's 365™

Is the system of choice for vinyl liner pool owners who demand the very best for their backyard investment. This unit is a unique combination of a high-performance, year-round automatic safety cover and long-lasting pool coping system.



## AutoGuard™ Top Track

The AutoGuard automatic pool cover top track system can be designed as part of nearly any pool shape. The cover's low profile track is securely mounted to the top of the pool deck. The leading edge of the cover is strong and bow resistant with wheel mechanisms that glide the cover open and closed.





## HyPerLite Solid Safety Covers

This secure solid cover option is also 30% lighter than standard solid covers and each comes standard with our distinctive Commercial Grade Springs on Custom Covers.

POOL EQUIPMENT

# Pentair IntelliCenter®

## Ultimate pool management starts here!

IntelliCenter Pool Control System is the most versatile Pentair automation system, delivering technology you can trust. Easily expandable, this system is now powered by AWS® cloud technology for improved stability, connectivity, scheduling and reliable, centralized control for multiple pool devices, from water features to lights to pumps. This system makes pool life as easy as it should be.

- Easy to program, with step-by-step, on screen instructions
- Color touchscreen interface displays intuitive instructions in clear text and rich colors
- Convenient control from inside and outside the home via outdoor and indoor control panels and wireless remotes
- Remote control from anywhere: Android® and iOS® device, and web browsers on Mac® and PC computers
- Interfaces with iOS®, Android® mobile devices, and Apple Watch®, enabling owners to check their pool status remotely



**The Pentair Home App** allows effortless control for your pool and spa devices from anywhere, anytime. The system automatically updates to keep system features current. Set and adjust schedules right from your mobile device. Easily adjust lights, pumps and other features, from anywhere, anytime.

POOL EQUIPMENT

# Pump Options

## IntelliFlo® VSF Variable Speed and Flow Pool Pump

IntelliFlo VSF pump is the first variable speed and flow pump that adjusts to changes in flow conditions to maintain its preprogrammed flow rate. It's like having cruise control for your pump.



## SuperFlo® VST Pool Pump

The SuperFlo VST Variable Speed Pool Pump features sophisticated technology in a simple-to-operate pump. Designed for pool owners who are practical and like to save.



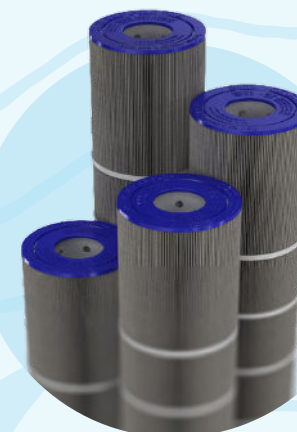
POOL EQUIPMENT

# Filter Options

## Clean & Clear® Plus Cartridge Pool Filters

Clean & Clear Plus Cartridge Pool Filters have a corrosion-resistant, injection-molded, fiberglass-reinforced, polypropylene filter tank featuring superior strength and reliability. The cartridge assembly uses four, nonwoven, polyester cartridges. There is no need for backwashing.

- **Clean & Clear 320**
- **Clean & Clear 420**
- **Clean & Clear 520**



## POOL EQUIPMENT

# Raypak® Gas Pool & Spa Heater

## 206A-406A

### Brilliantly Made with You in Mind

Our Raypak Digital Gas Pool and Spa Heaters feature innovative technology designed to keep your pool or spa at the perfect temperature for your enjoyment. Built to withstand various weather conditions, this modern pool and spa heater is the perfect solution for environments requiring efficiency, convenience and versatility.

Thanks to a brilliant low-profile design built with a bevy of corrosion resistant materials, enjoying your heater year round is a breeze.



## POOL EQUIPMENT

## Cleaner Options

### Pentair Prowler® 920 Pool Cleaner

The Pentair Prowler 920 Robotic Pool Cleaner offers a superior level of cleaning, scrubbing and vacuuming all the way to the tile line. Just plug in the Prowler 920 and watch it go to work.



### Maytronics Dolphin® Liberty™ 300 Cordless

Outstanding cordless performance for an efficient clean, the Dolphin Liberty 300 features inductive Magnetic-Connect for super easy charging. Featuring interchangeable filter options to tackle every level of dirt, dust and debris.

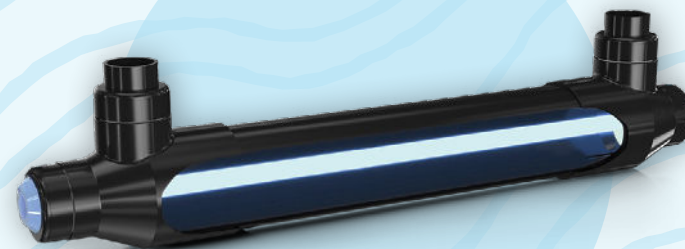


POOL EQUIPMENT

# Chemical Control Options

## BioShield® UV System

Provide a cleaner, clearer and more enjoyable pool experience for friends and family – harness the power of ultraviolet light to reduce harmful chloramines which can help reduce itchy skin, burning red eyes and chemical odors. Automation compatible: easily pairs with IntelliTouch® or EasyTouch® Pool Control Systems and IntelliChlor® Salt Chlorine Generators and/or IntelliChem® Water Chemistry Controllers for ultimate pool control and operation ease.



## IntelliChem® Water Chemistry Controller

The IntelliChem Chemical Controller automatically monitors pool pH and delivers the desired level of chemicals to keep pools cleaner, clearer, and ready to enjoy anytime. Its built-in Langelier Saturation Index calculator lets pool owners know when the water is in or out of balance. IntelliChem Chemical Controller uses the same Pentair technology found in commercial installations, water parks, hotels, and community pools.



**Enjoy the benefits of a Salt Cell** With less chlorine and less of the heavy chemical scent and content in your pool, the water is gentler on the skin, eyes, hair and swimsuits. has a softer, silkier feel to it compared to chlorine water. They have lower maintenance costs than chlorine pools.



POOL OPTIONS

# Pool Lighting

## Who said pool time ends when the sun goes down?

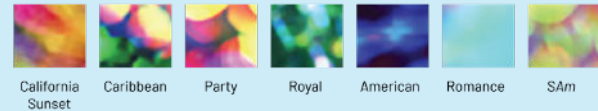
A beautifully lit pool creates more than ambiance. Pentair IntelliBrite underwater pool lights cultivate an inviting backyard oasis where you can splash the night away.

Bring out your pool's full beauty. Transform pool nights with a softer, broader, more evenly distributed lighting experience that minimizes dark areas, hot spots, glare and stripes.

Control and automate your pool's dynamic light shows and colors from your app!



Dynamic color-changing light shows



Brilliant color choices



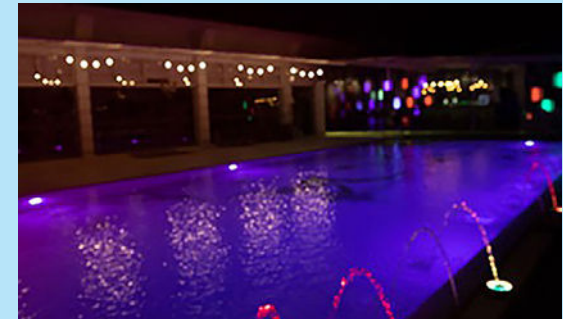
### Pool and Spa Light

Pool & Spa Lighting illuminates your pool with high-quality LED lighting, featuring dazzling multi-color or white output that covers larger pool areas.



### Compact Lights

Compact Lights provide flexible lighting solutions to illuminate an entire pool or to highlight a pool's features in smaller or shallow spaces.



### Illuminated Water Features

Illuminated Water Features deliver personality and movement to a pool, deck or spa with sounds to compliment your poolside.

## POOL OPTIONS

# Sports & Features

Looking for some fun in the sun? Nassau Pools & Spas can help you find just the right pool sports and activities amenities to help you host that next perfect pool party.

**DIVING BOARDS****SLIDES****VOLLEYBALL****BASKETBALL ...and more!**

## POOL OPTIONS

# Water Features

## Fountain Lights and Fixtures

Bathe your backyard fountains with vivid white, a custom color or a constantly changing spectrum with Pentair Fountain Fixtures. Easy to install, these fixtures are the only ones to offer true color-lighting capabilities.



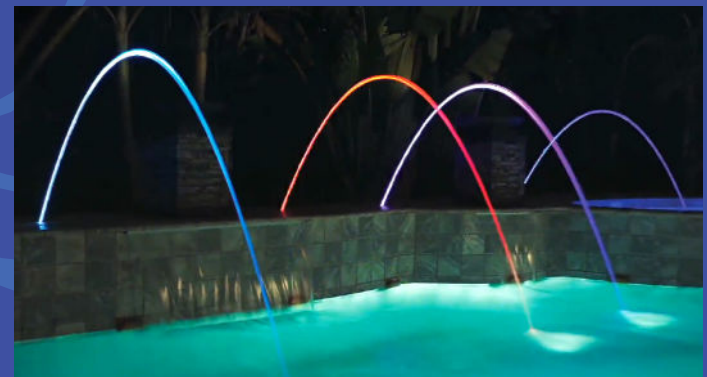
## IntelliBrite® Landscape Light

Lights dramatically transform your backyard oasis to fit your mood. Whether it's a relaxing evening or an exciting party, energy-efficient, long-lasting IntelliBrite landscape lights are easily placed to help you create the perfect atmosphere.



## MagicStream® Laminars

MagicStream Laminars with 100% synchronization with IntelliBrite 5g LED color and white lights create clear, uniform arcs of moving water that originate from either a pool deck or surrounding landscape. At night, these translucent streams are brilliantly colored, creating a water effect that adds elegant entertainment to your poolscape.



## MagicFalls® Water Effects

Lights dramatically transform your backyard oasis to fit your mood. Whether it's a relaxing evening or an exciting party, energy-efficient, long-lasting IntelliBrite landscape lights are easily placed to help you create the perfect atmosphere.



## ColorVision® LED Bubbler with GloBrite® LED Lights

The ColorVision Bubbler is a combination of the ColorVision Niche and Pentair GloBrite LED light to create vivid fountain-like water movement. It is the perfect way to showcase and enhance pool features like sun shelves, steps, beach entries and poolscape elements like ponds and fountains.



## MagicFlame™ Fire and Water Bowl

Dazzle a backyard oasis with the flickering of flames or relax to the soothing sounds of falling water with MagicFlame. With five finish options to match most poolside decors, MagicFlame is the perfect pool accessory to make backyards a step away from paradise.



## Deck Jet and MagicStream® Deck Jet II Water Effects

Deck Jet water effects can be cast into concrete decks and gunite pool walls, mounted in the sidewall of aboveground and vinyl-lined pools, or blended into surrounding landscapes. It creates a graceful arc of water that enters the pool with a gentle splash. The stream seems to appear magically from the pool deck since the jet installs flush and out of sight.



POOL OPTIONS

# Pool Decking

Your pool decking enhances the aesthetic appeal, safety, and functionality of your pool area. Concrete and paver options provide excellent non-slip properties, longevity, and versatility.

Concrete can be customized to mimic various materials such as stone or wood while pavers offer a variety of patterns and colors, providing a wide range of possibilities to suit any design preferences.

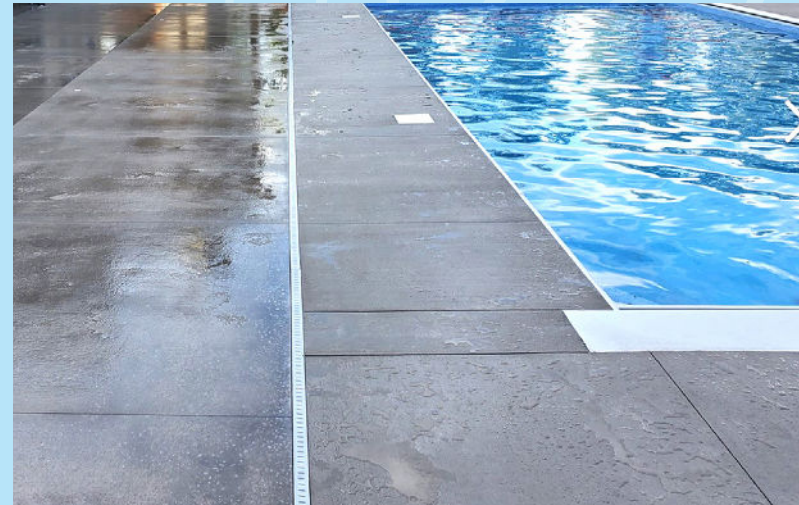
Great pool decking will boost overall ambiance, encourage relaxation, and provide a comfortable space for pool-side leisure.



**STAMPED CONCRETE**



**PAVERS**



**BRUSHED CONCRETE**

## POOL OPTIONS

# Hot Tubs

## Welcome to your ultimate relaxation oasis!

Transform your backyard into a haven of tranquility with our premium selection of state-of-the-art hot tubs, designed to elevate your leisure time to new heights.

### Nordic Encore LS™

Escape to Affordable Luxury in Nordic's Encore LS! Once you've settled into the corner captain's chairs or our No-Float™ lounger, the Encore LS will envelope you in Affordable Luxury from neck to toes.

Powerful Nordic Star™ jets work their magic on your neck, back, hips and feet. Muscles you didn't even know you had begin to unknot and unwind, letting you drift into complete relaxation. You've never felt this good and you may not want to leave...ever! But don't worry, your Encore LS will be ready and waiting for your next soak session.

### Nordic Jubilee LS™

The Jubilee LS sets the standard in Affordable Luxury! Step into the swirling water of the Jubilee and let it lavish your neck, back and feet with luxuriant hot water therapy.

The powerful massage will push your 'reset' button so you emerge renewed and refreshed! Indulge in Affordable Luxury with Nordic's Jubilee LS!



**Nordic Encore LS™**



**Nordic Jubilee LS™**



## Next Steps

- 1.** Now that we've got a vision for your project, we're ready to bring it to life
- 2.** Draw up a formal bid and align on what to include and remove
- 3.** Once aligned we move to a 3-D design so you can truly visualize your investment
- 4.** Now we're ready to complete the contract and submit 20% down payment to lock in your spot in the schedule
- 5.** Just before we kick off building we'll schedule a design meeting and walk through all aspects
- 6.** The last piece is the first time you and your family get to jump in, and that's the kickoff of a life long relationship with Nassau Pools and Spas

# Preferred Partners

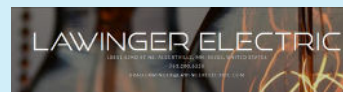
## CONCRETE

Derek Weber Dynamic Concrete  
dynamicconcreteminnesota.com



## ELECTRICIAN

Brad Lawinger  
brad-lawinger-tf23.squarespace.com



## LANDSCAPERS

Grizzly Construction  
grizzlyconstructionmn.com/outdoor



## SURVEYORS

W. Brown Land Surveying, Inc.  
wbrownlandsurveying.com

W. BROWN LAND SURVEYING, INC.

## EXCAVATORS

Larry Miller Trucking  
millertruckinglandscaping.com





# NASSAU POOLS & SPAS

(763) 441-4993

11850 62nd Street NE  
Suite 101  
Albertville, MN 55301

[info@nassaupoolsandspas.com](mailto:info@nassaupoolsandspas.com)

---

[nassaupoolsandspas.com](http://nassaupoolsandspas.com)